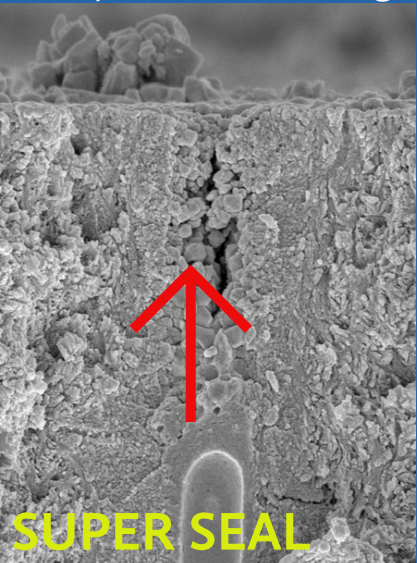


# Super Seal®

Is a water-based potassium oxalate desensitizer. It is uniquely different than other desensitizers on the market because it does not have to be refrigerated and for extra patient comfort, it can be warmed to body temperature or slightly above.



HOW  
IT  
WORKS

Enamel, dentine and cementum are composed of high concentrations of alkaline calcium hydroxyapatite(HAp). Super Seal® reacts with HAp to rapidly form millions of acid resistant chelate precipitates within the dentinal tubules at depths of 7-12 microns and on the surface of the vital dentine substrate, leading to a long lasting seal, preventing patient hypersensitivity and blocking bacterial penetration to the vital pulp. Super Seal® is water based and re-wets the preparation surface before an impression, without leaving any film thickness to interfere with the bonding process.

## Is Sensitivity the Number One Complaint in Your Office?

We have the Answer.



**Super Seal®**  
Efficient. Economical. Effective.

Doctor Recommended and Clinically Proven.

PRESENTED BY

**Phoenix Dental Inc.**

Better Dentistry Through Chemistry®

Super Seal® - A trusted product, from a trusted company!

Super Seal® has held a cleared 510(k) since 1998. It is also licensed in Canada, and CE marked for conformity to European medical device regulations.

Phoenix Dental is ISO 13485 certified, MDSAP certified, and an FDA Registered Establishment.

# Contact Us Today!

3452 W. Thompson Rd.  
Fenton, MI 48430

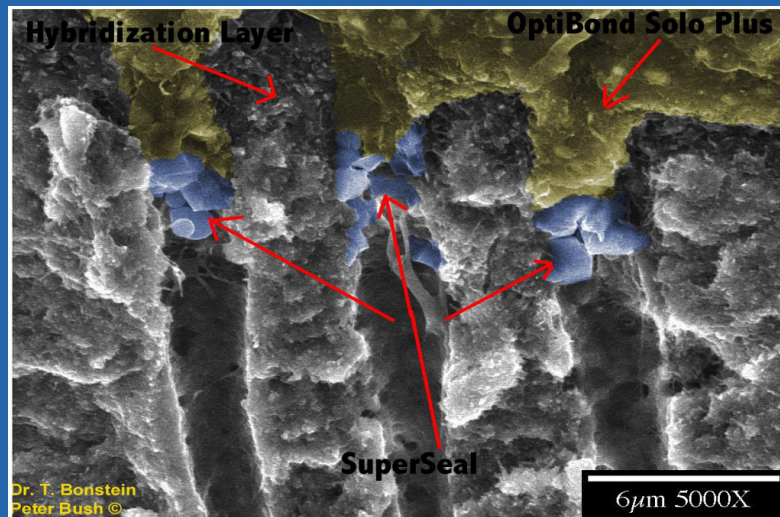
Call: 810-750-2328

Toll Free: 877-463-9905 (US/Canda)

Fax: 810-750-7495

Email: [sales@phoenixdental.com](mailto:sales@phoenixdental.com)

[www.phoenixdental.com](http://www.phoenixdental.com)



## Super Seal® can be used with today's adhesive systems.

Super Seal® is biologically compatible with soft tissue, works well after periodontal surgery, and may enhance tissue re-attachment.

Place Super Seal® first, as no etching is required before or after application. You may then follow with the adhesive agent system of your choice.

## Doctor Uses

- Periodontal Surgery
- Exposed Dentine
- Re-wetting Agent
- During Temporizations
- Under Restorations



## Hygiene Uses

- Thermal Sensitivity
- Before and After Prophylaxis
- Before and After Bleaching
- Exposed Root Surface

## Directions for Use

- Place 1-2 drops of Super Seal® in a well. Use more when necessary.
- Use a sterile microbrush, micro sponge or small cotton pellet and saturate with Super Seal®.
- Gently rub the saturated end over the affected surface for at least five seconds. Super Seal® will not irritate any of the gingival or pulp tissues.
- Once Super Seal® has been spread over the surface, gently disperse air at approximately 5 inches away. No light curing is necessary. Any appearance of a frosty-white surface indicates the chemical chelation reaction has occurred with blockage of the dentine tubule complex.

*"I have a closet full of materials for sensitivity. I was amazed to find one that works consistently!" -John D.H., DDS, Hope, Indiana*

*"A desensitizer that really works and is kind to soft tissue!" - Brian S., DDS, Beverly Hills, California*

*"Super Seal® is a tremendous addition to adhesive dentistry and it takes the worry out of sensitivity. It truly acts as a desensitizer and re-wetting agent!" -Arthur(Tony) T., DDS, Clinical Instructor at LVI & Lecturer, Las Vegas, Nevada*

*"Super Seal® has consistently decreased sensitivity without affecting the bond." -Rhys Spoor, DDS, Seattle, Washington*

